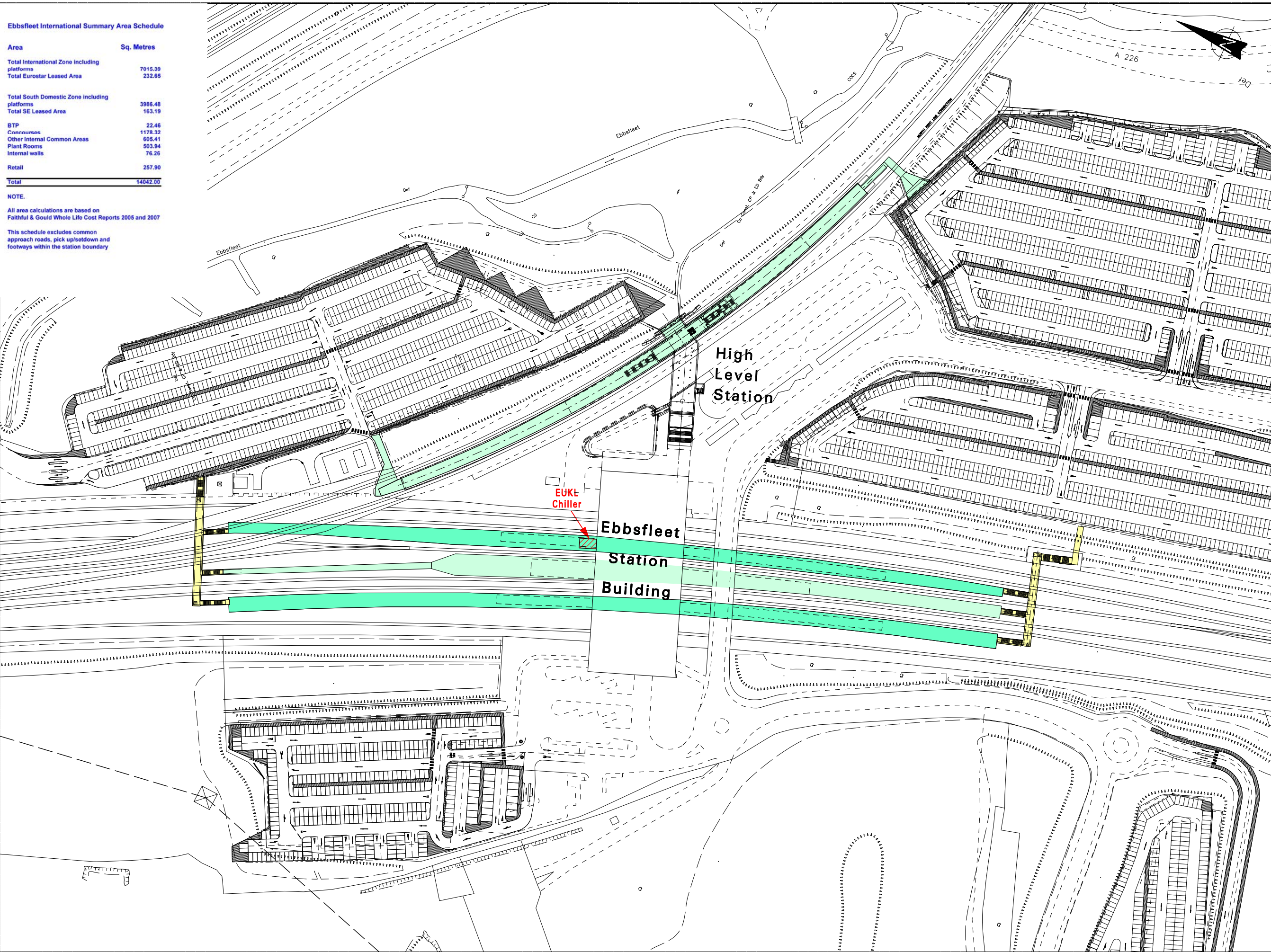


Produced by LONDON & CONTINENTAL STATIONS & PROPERTY as agents for the Secretary of State for Transport. Based upon Ordnance Survey large scale digital mapping with the permission of The Controller of Her Majesty's Stationery Office. London & Continental Railways Ltd. Licence No. 10004746 © CROWN COPYRIGHT

Ebbsfleet International Summary Area Schedule

Area	Sq. Metres
Total International Zone including platforms	7015.39
Total Eurostar Leased Area	232.65
Total South Domestic Zone including platforms	3986.48
Total SE Leased Area	163.19
BTP	22.46
Concourses	1178.32
Other Internal Common Areas	605.41
Plant Rooms	503.94
Internal walls	78.26
Retail	257.90
Total	14042.00

NOTE.
All area calculations are based on Faithful & Gould Whole Life Cost Reports 2005 and 2007
This schedule excludes common approach roads, pick up/setdown and footways within the station boundary



- EUROSTAR (UK) LTD LEASE
- INTERNATIONAL ZONE
- SOUTH EASTERN LEASE
- DOMESTIC SOUTH BOUND ZONE
- COMMON TOC
- COMMON (ALL)
- RETAIL
- CAR PARK
- SFO RETAINED AREA FOR DELIVERY OF COMMON STATION SERVICES
- PLANT AREAS
- EDPE
- SYSTEM WIDE
- B.T.P.

1:2000 @ A3

Reference

Purpose

Drawn By	Date	Approved By	Date
IRC	15-11-07		
Checked By	Date	Team Leader, Departmental/Design Manager	Date
DDR	15-11-07		
Job Code	Head of Department		Date
07/183	Approved By		
	Director		



Title
**EBBSFLEET STATION
PLAN 4
PLATFORM LEVEL**

Chainage	Route Window	Original Scale	Original Size
36-600	6050/60	1:1000	A1

Drawing Number
014-DCB-1D000-00688-AC