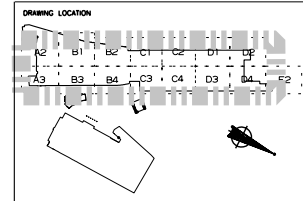


Produced by LONDON & CONTINENTAL STATIONS & PROPERTY as agent for the Secretary of State for Transport. Based upon Ordnance Survey large scale digital mapping with the permission of The Controller of Her Majesty's Stationery Office. London & Continental Railways Ltd. Licence No. 1000796 © CROWN COPYRIGHT

1. DO NOT SCALE FROM THIS DRAWING.
2. ALL DIMENSIONS ARE IN MILLIMETRES UNLESS STATED OTHERWISE.



- EUROSTAR (UK) LTD LEASE
 - INTERNATIONAL ZONE
 - EAST MIDLANDS TRAINS LEASE
 - DOMESTIC NORTH BOUND ZONE
 - SOUTH EASTERN LEASE
 - DOMESTIC SOUTH BOUND ZONE
 - FIRST CAPITAL CONNECT
 - COMMON TOC
 - COMMON (ALL)
 - RETAIL
 - CAR PARK
 - SPO RETAINED AREA FOR DELIVERY OF COMMON STATION SERVICES
 - PLANT AREAS
 - EDFE
 - SYSTEM WIDE
 - B.T.P.
 - H.M.R.C. COMMERCIAL LEASE
 - OPERATIONAL STATION
 - TRACKBED WITHIN STATION
- SEE GROUND FLOOR PLAN FOR SUMMARY AREA SCHEDULE

Scale 1:1,000 @ A2

Reference



Drawn By	Date	Approved By	Date
IRC 08-11-07			
Checked By	Date	Team Leader, Departmental/Design Manager	Date
DDR 29-10-07			
Job Code	Approved By	Head of Department	Date
07/236			
		Director	



Title
ST PANCRAS INTERNATIONAL STATION PLAN 3 PLATFORM LEVEL

Change	Route Window	Original Scale	Original Size
100	N/A	1500	A0

Drawing Number
014-DCG-1D000-01041-AC

